



**ASNUFIL**  
Aluguer de Equipamentos



**Auto Gruas Telescópicas**

*Disponos no nosso parque:  
Auto Gruas Telescópicas  
de 25, 30, 50 e 55 toneladas*

**Empilhadores Telescópicos**



**Plataformas Elevatórias**



Rua Santo Amaro, 59 - 3860-909 Estarreja  
EC Estarreja - Apt. 18

[eugenioneves@asnufil.pt](mailto:eugenioneves@asnufil.pt)

Telem.: 935 051 781  
Tef.: 234 107 019  
Fax: 234 847 477



**ASNUFIL**  
Aluguer de Equipamentos

**Catálogo Técnico**

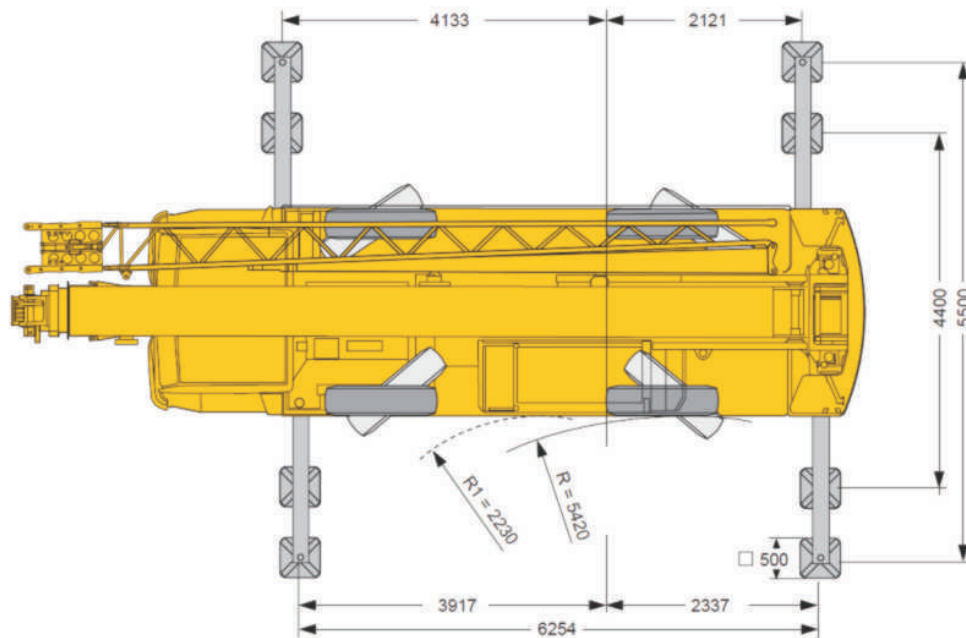
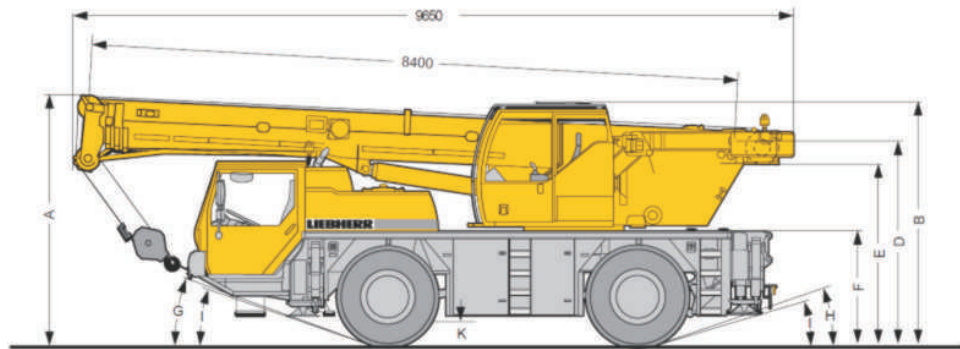
**Gruas telescópicas / Plataformas Elevatórias  
Empilhadores Telescópicos**





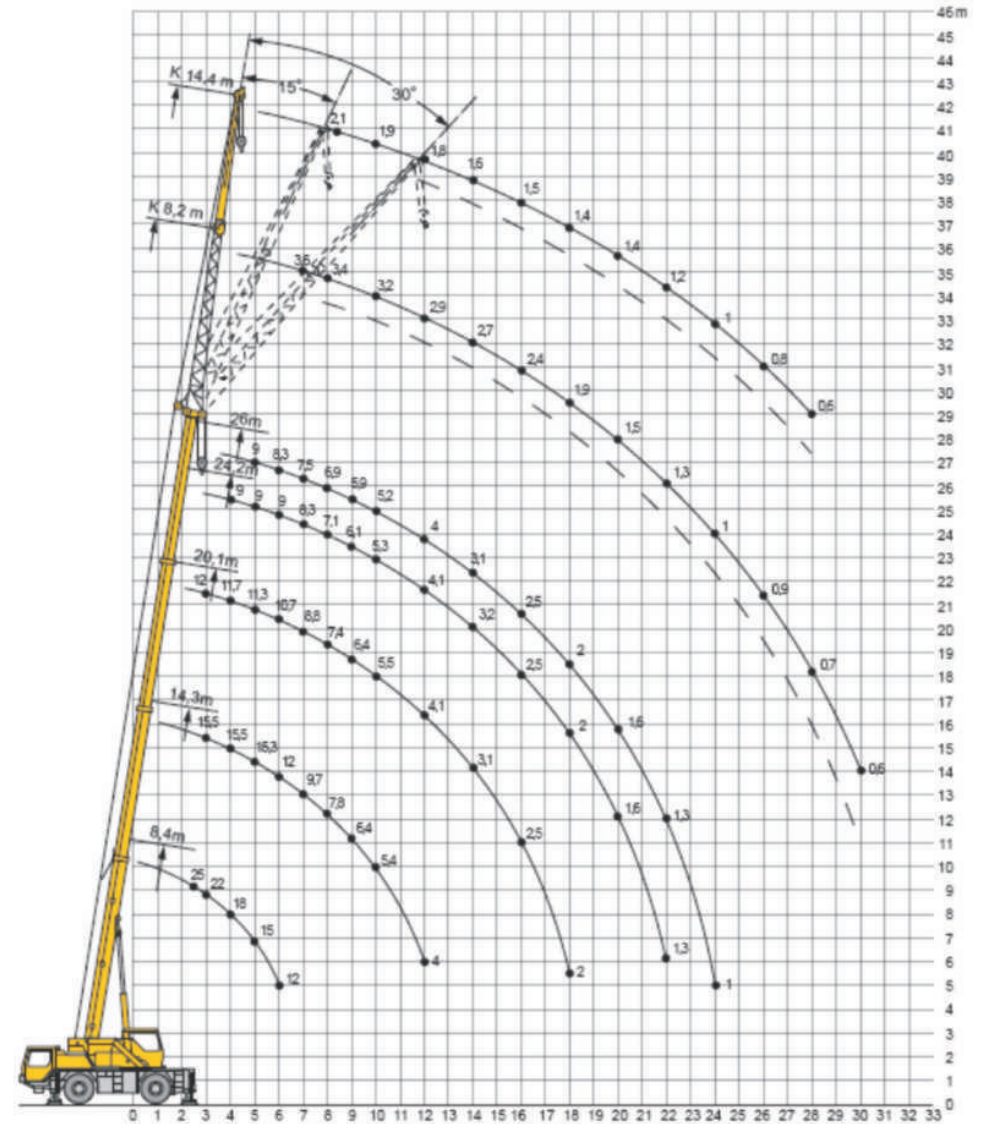
# LIEBHERR

## LTM 1025/1



# LIEBHERR

## LTM 1025/1





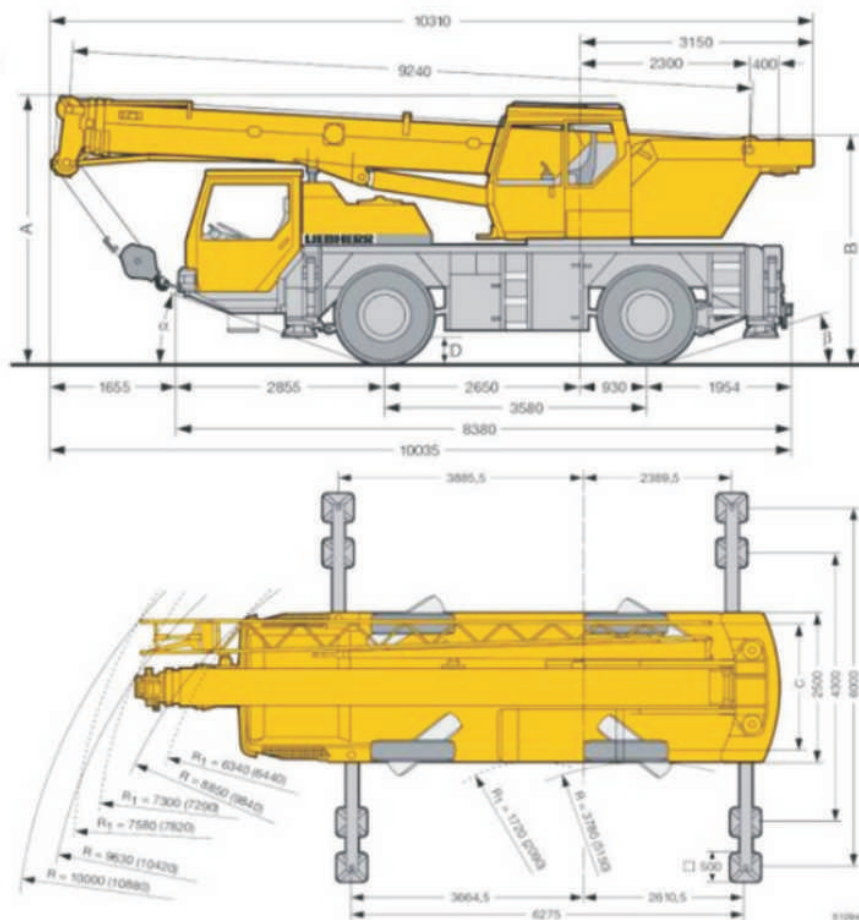


# LIEBHERR

## LTM 1030/1



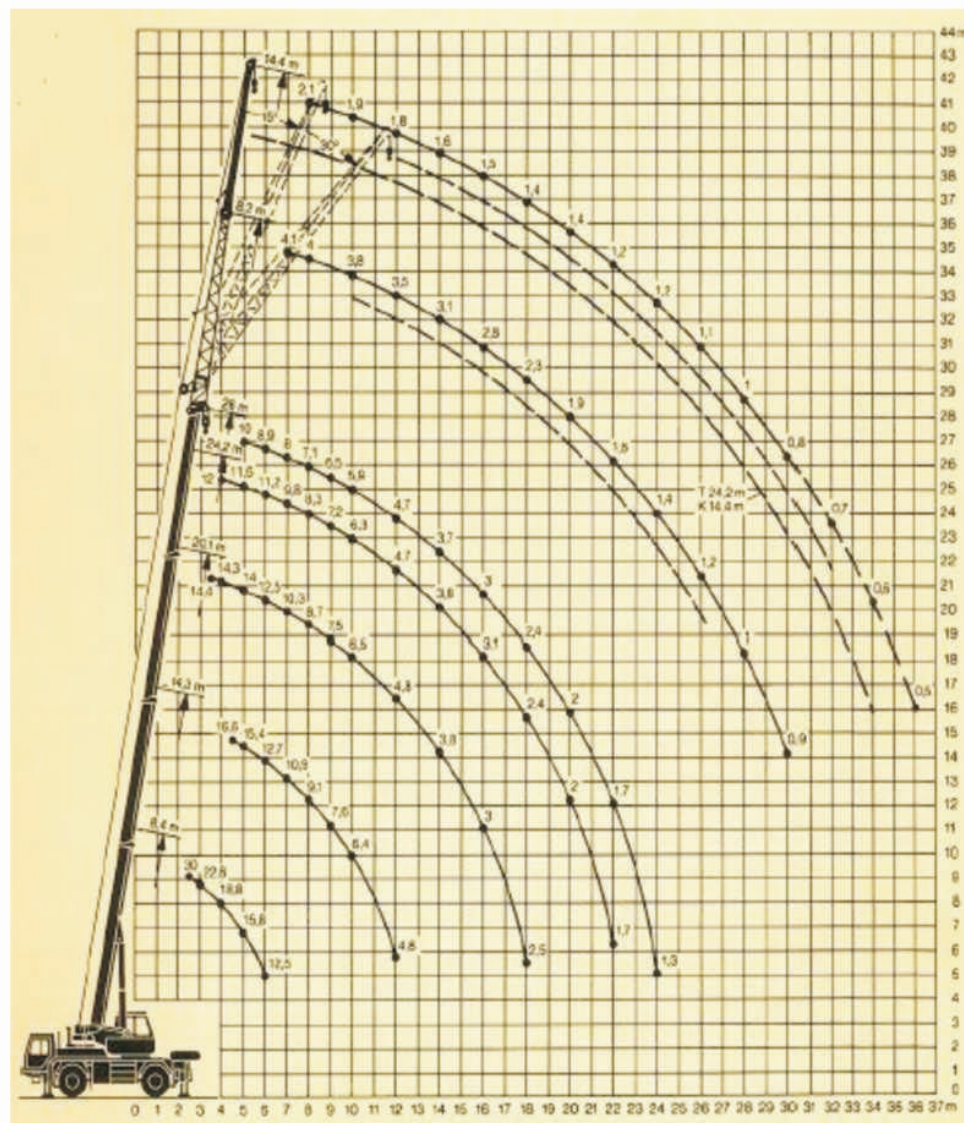
Carga máxima com raio 3 m. - 30 t.  
Lança telescópica - 30 m.  
Gib + Fly - 8,6 + 6,4  
Direcção - 4 x 4 x4  
Peso operativo - 24 t. (2 x 12 t. por eixo)  
contrapeso total - 5,2 t.

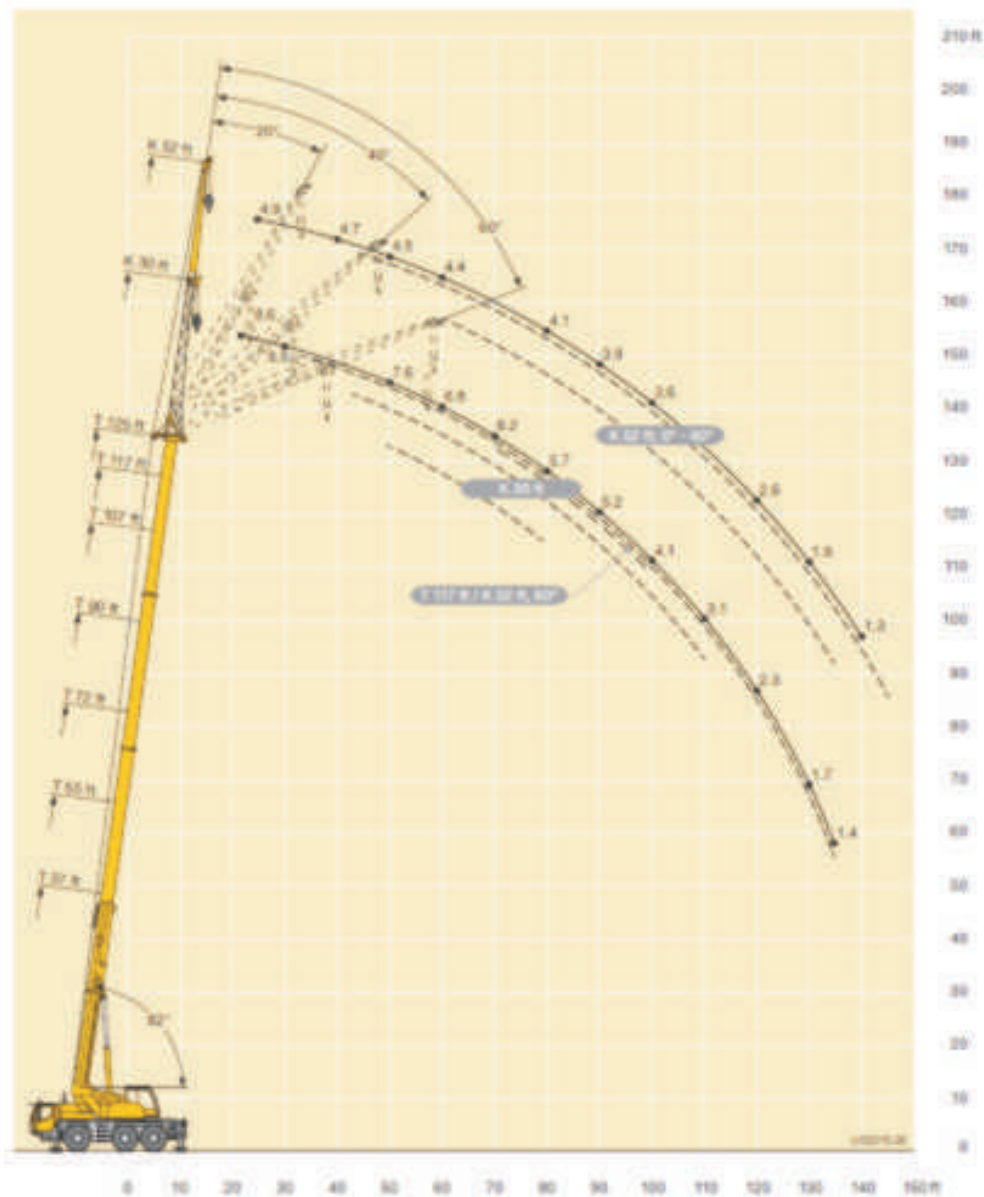


	A	A <sub>1</sub>	B	C	E	F	G	H	I	J	K	L
14.00 R 25	3585	3485	2500	2114	2950	380	440	23°	15°	23°	15°	15°
17.5 R 25	3570	3470	2600	2154	2935	380	440	23°	15°	23°	15°	15°

# LIEBHERR

## LTM 1030/1







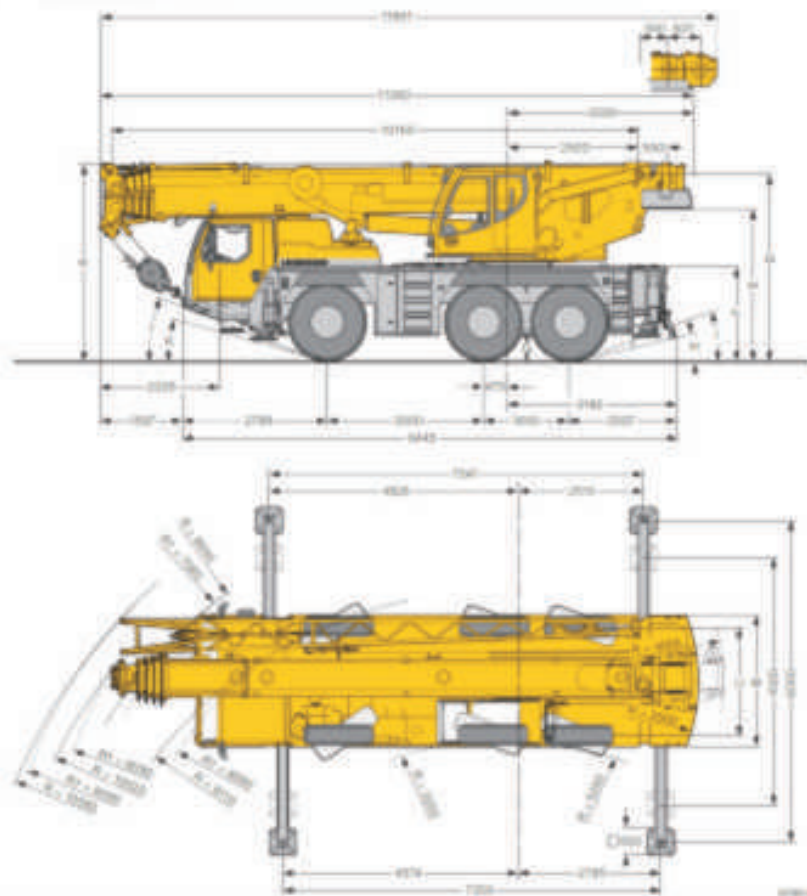


# LIEBHERR

## LTM 1055/3.2



LIEBHERR LTM 1055/3.2  
Carga máxima com raio 2,5 m - 55 t.  
Lança telescópica - 40 m.  
Gib + Fly - 9,5 + 6,5  
Direção - 8 x 6 x 8  
Peso operativo - 36 t. (3 x 12 t. por eixo)  
Contrapeso total - 12 t.



W. = Wiederkling - All wheel steering. Direction indicator. T. = Total length of crane. C. = Crane length. D. = Dimension of crane. F. = Fly length. G. = Gib length. H. = Hook length. I. = Hook height. K. = Hook width.

	Main Dimensions - Encomendament				Dimension - Dimensions				Passage - per		
	A	B	C	D	E	F	G	H	I	K	
	100 mm										
305/55 R 25 (14.00 R 25)	3750	3000	2540	2113	3499	3500	1710	375	11"	18"	13"
445/55 R 25 (18.00 R 25)	3750	3000	2540	2101	3548	3500	1760	425	12"	20"	19"
525/55 R 25 (20.00 R 25)	3750	3000	2540	2101	3548	3500	1760	425	12"	20"	19"

# LIEBHERR

## LTM 1055/3.2

